

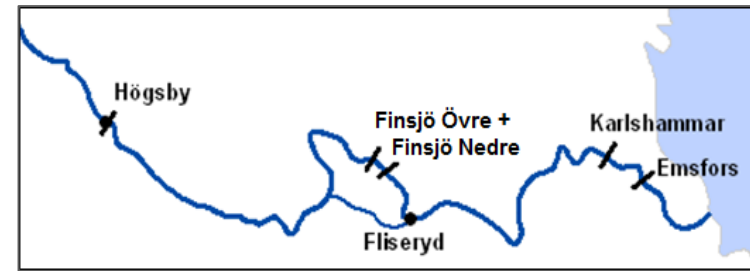
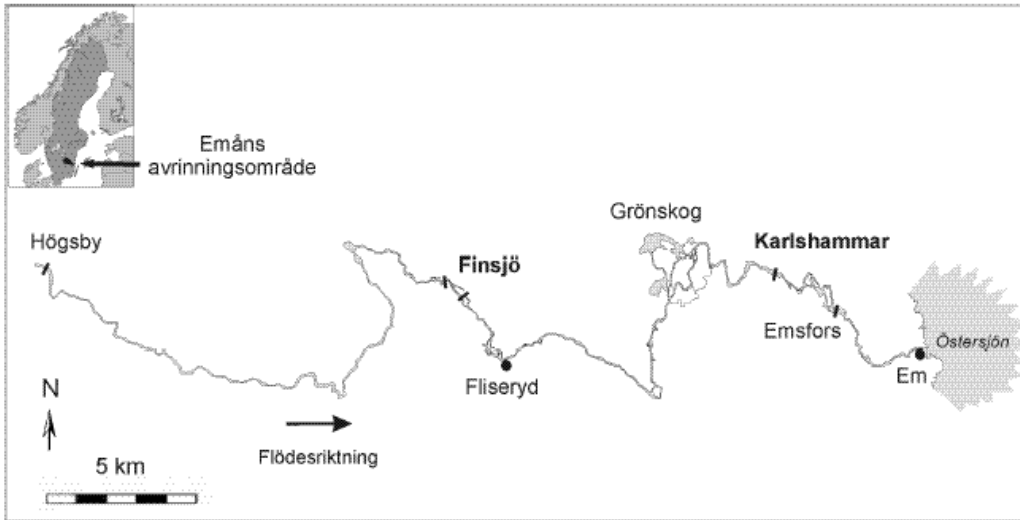
uni per



LIFE 20201112

Finsjö övre – new solutions for improved connectivity

Orientation

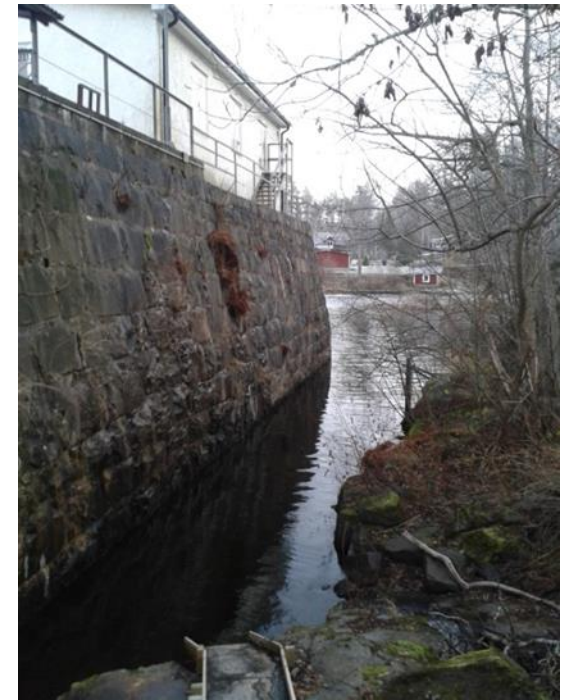
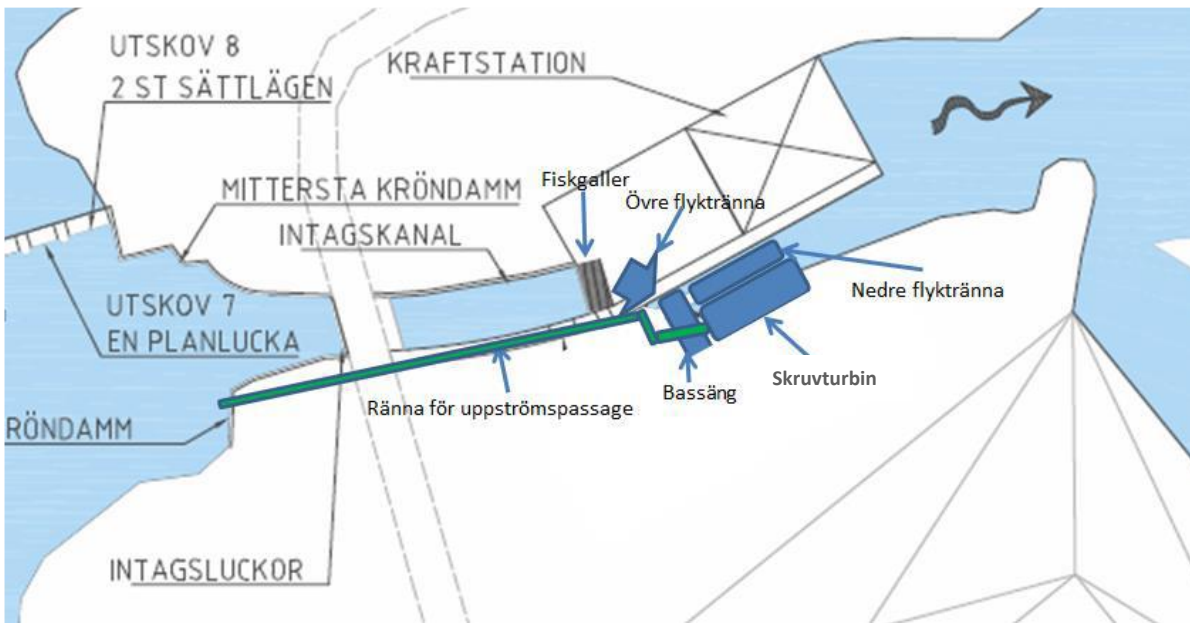


Hydroconnect fish-lift

- Evaluated by the University of Wiena
- Passable up- and downstream for fish
- No fish hurt when passing
- Target species and local conditions decide design and size
- Optimated attraction flow
- Simple installation and robust construction, needs little space
- Generates electricity (efficiency ca 70 %)
- More info at www.hydroconnect.at

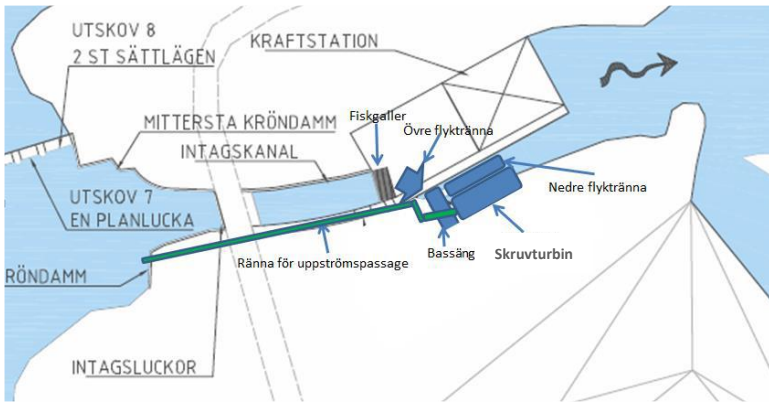


Placering

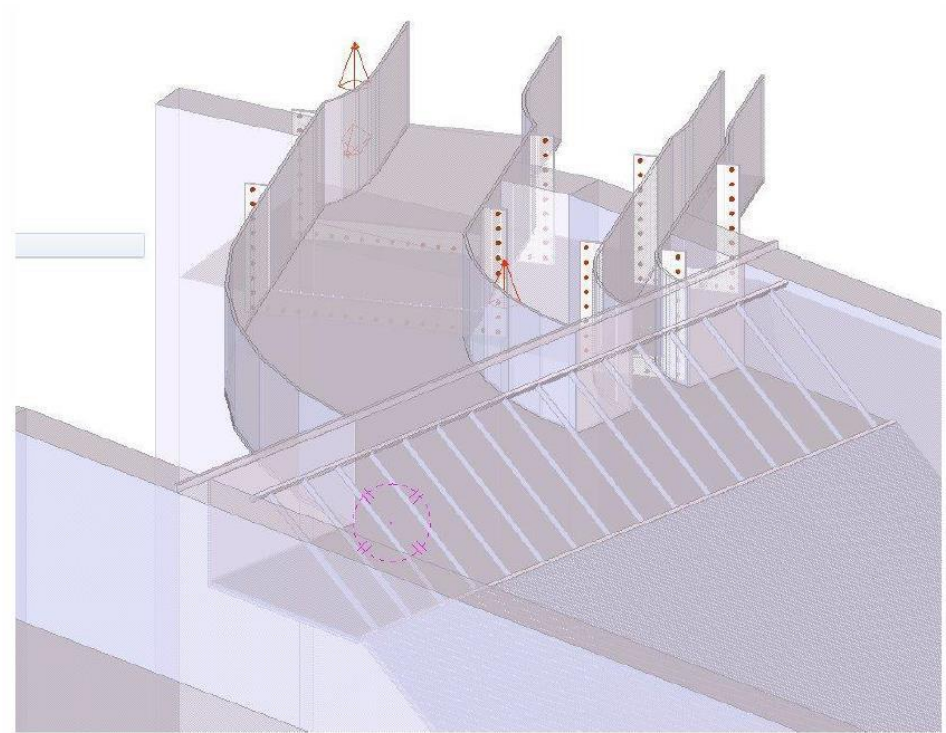


- Installation parallell with intake and turbine outlet suitable
- Enables tests in combination with or without present downstream solution
- Increased ecological flow in old riverbed

Design modified downstream solution



- Wider escape openings
- Bar with wide spacing from surface and above to protect against debris etc
- Accelerating water velocity
- Capacity 200 – 850 l/s
- Downstream passage via screw or "ramp"



Time plan

- Environmental court October 2020
- Decision from environmental court December 11 2020
- If not overruled, installation during 2022

